

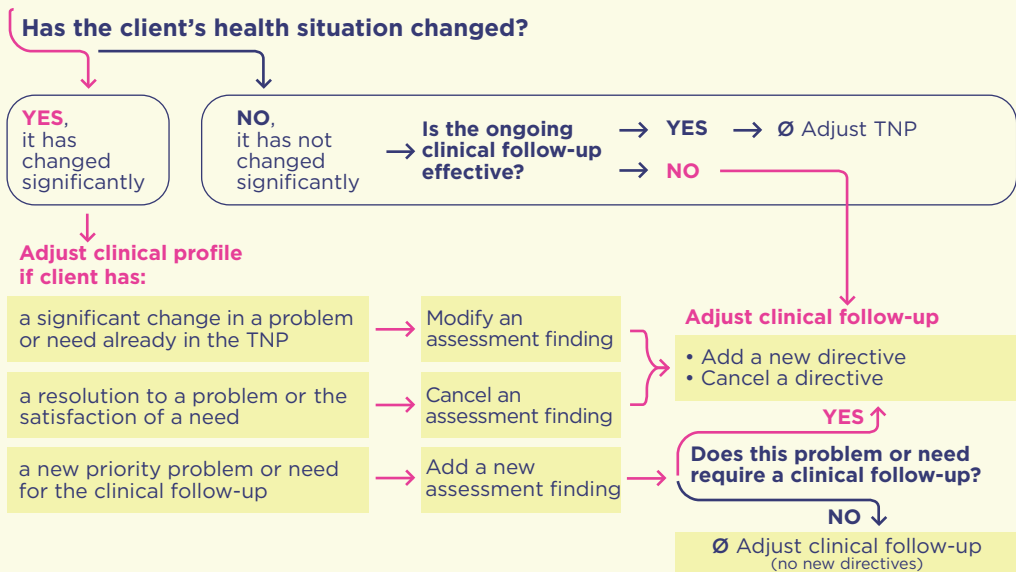
The TNP: From Assessment to Action

Because we care about Quebecers' health

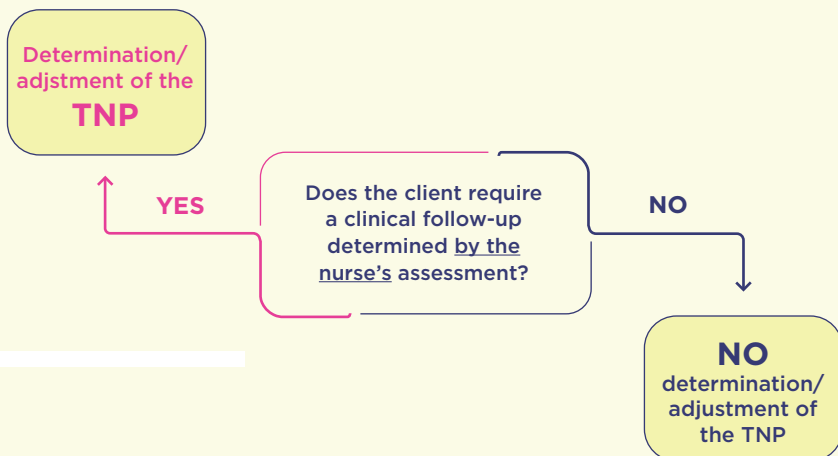


pti.oiiq.org

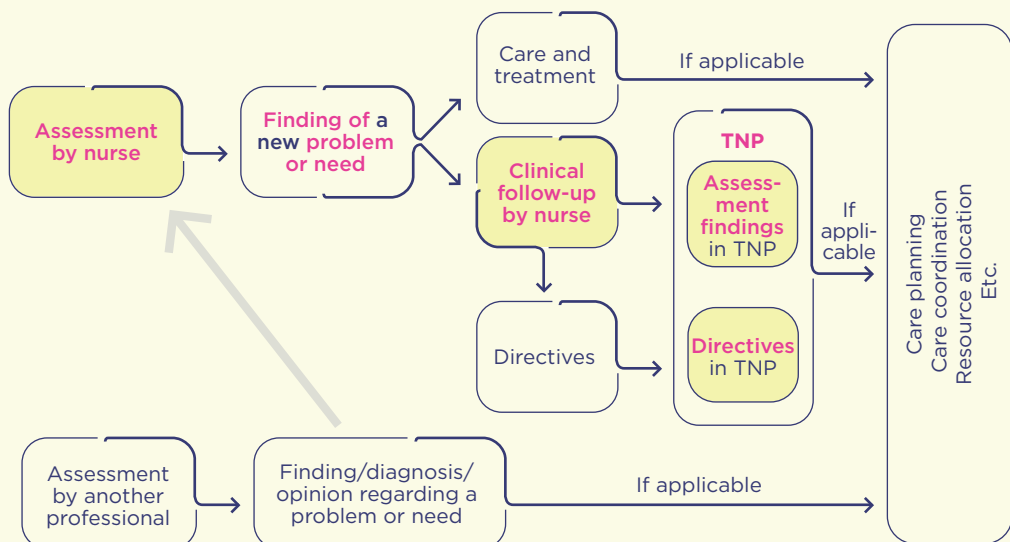
Adjustment of the TNP



Applying the documentation standard when determining a TNP



Determining the TNP



To be completed in TNP:

ASSESSMENT FINDINGS

- Any problem or need requiring a nurse's clinical follow-up determined and adjusted by the nurse and any significant changes to this problem or need as it evolves
- Any problem or need that has an impact on the clinical follow-up

NURSING DIRECTIVES

- Any indication that ensures the clinical follow-up required, standard or particular, such as:
 - Establishing an intervention strategy
 - Specifying an aspect of the intervention
 - Determining a condition for success

REMINDER

- A directive must be associated with at least one problem/need.
- A problem/need may not be associated with one directive, for example:
 - The problem/need has an impact on the follow-up, but requires no follow-up itself.
 - The assessment finding is made, but the follow-up has not yet been determined.

Formulation of nursing directives

ELEMENTS OF A DIRECTIVE

Purpose of the directive: what it intends to accomplish

(Clinical surveillance activities – Care/treatment – Other interventions)

Target of the directive: to whom it is addressed *(if required)*

Duration or frequency: *each time it is relevant*

THE RULE

Each directive must be formulated in such a way as to be easy to understand and apply correctly by the persons to whom it is addressed.

EXAMPLES :

Alternate position every hour for 48 h – dir. to orderly work plan

30 mg codeine 1 pill 30 minutes before physio

Daily dressing according to treatment plan #4 by nurse

Assess suicide risk q 4 h

Specify transmission method if target does not have access to TNP

Activity reservation, according to the law or if clinically relevant

REMINDER

A directive indicates a method or action to ensure the follow-up required. It is not an objective.